

Change Mode on Esky ET4 2.4ghz transmitter (Honey Bee Fixed Pitch V2)

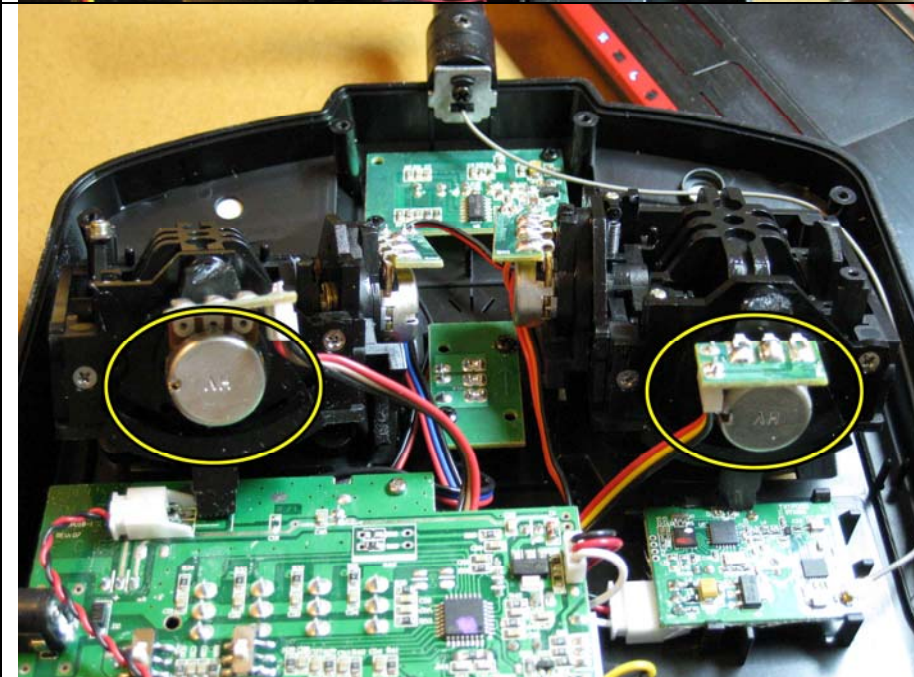
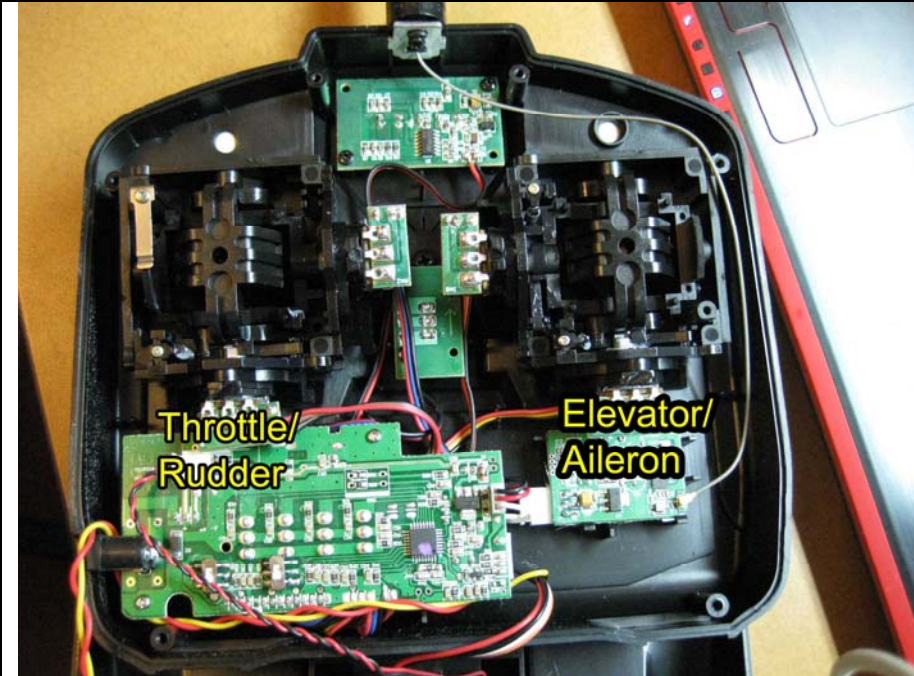
Mode 1
(right hand throttle)



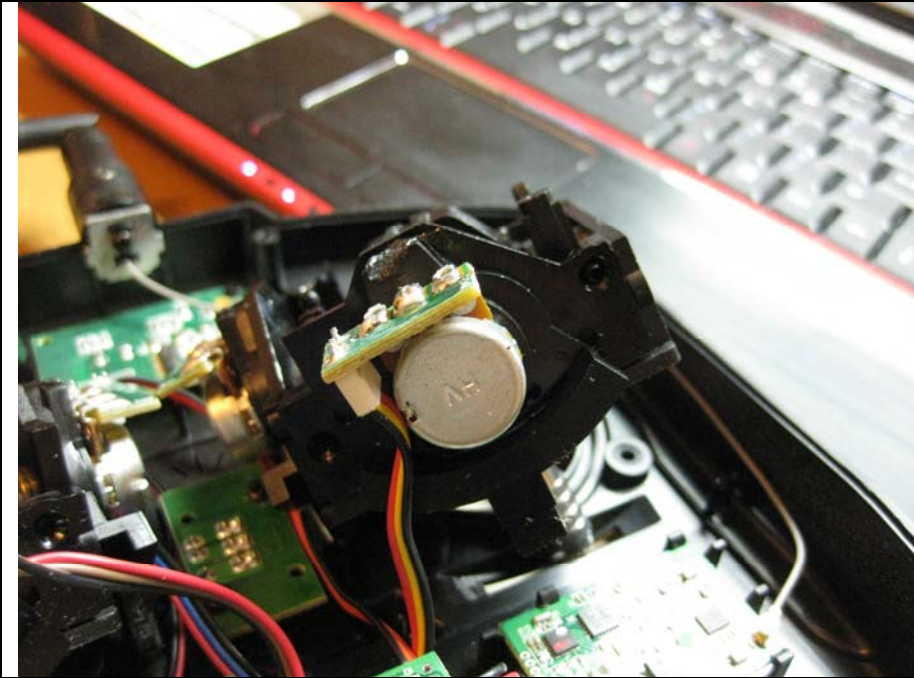
Remove the 8 screws on the front

Remove the 6 screws on the back





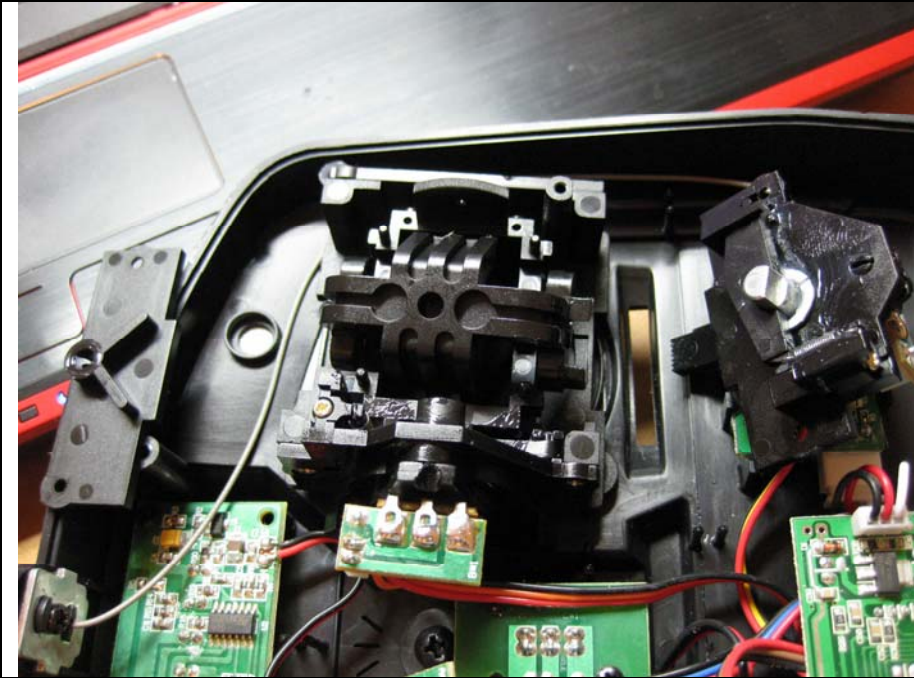
Remove the potentiometers on the bottom. They are rudder on the left and aileron on the right.



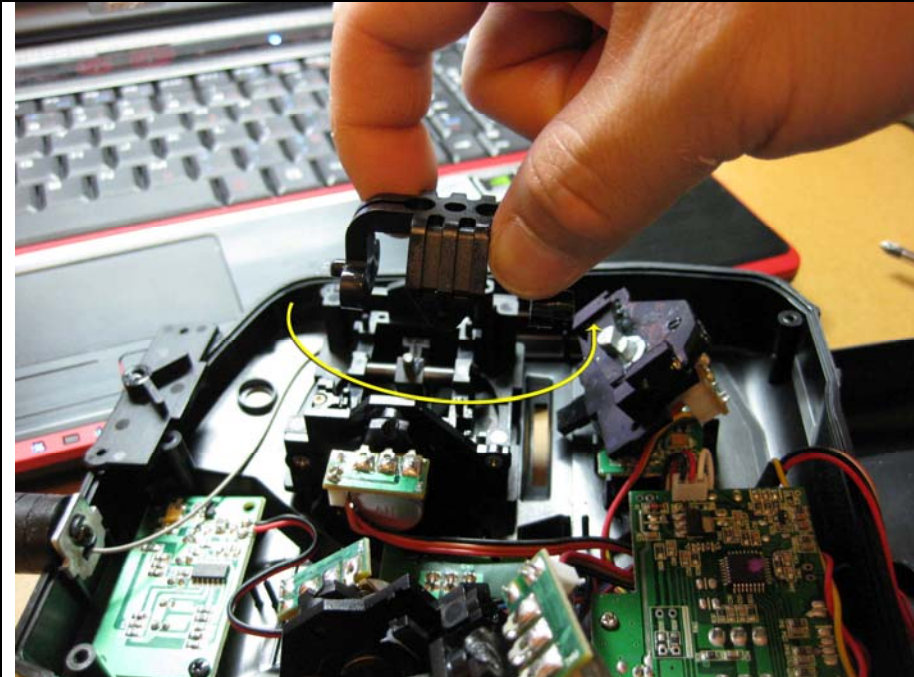
Remove the aileron pot



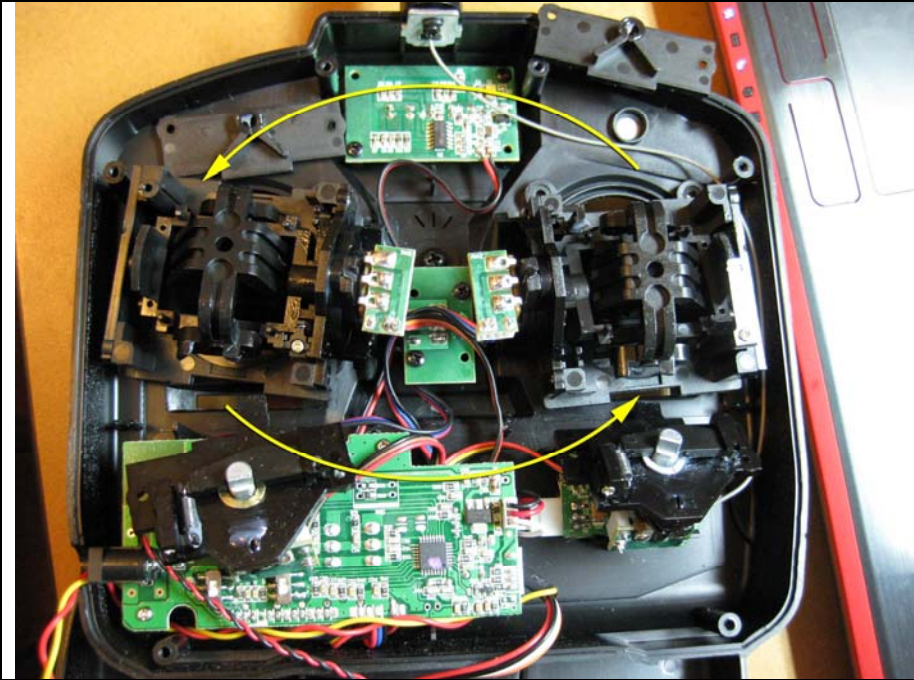
Remove the plastic plate on the other side of the box



Here is what it looks like disassembled



Turn this piece around



Turn and swap these parts to the other side. The pots will be inward

Then reassemble the aileron and rudder pots.



Put everything back together

